

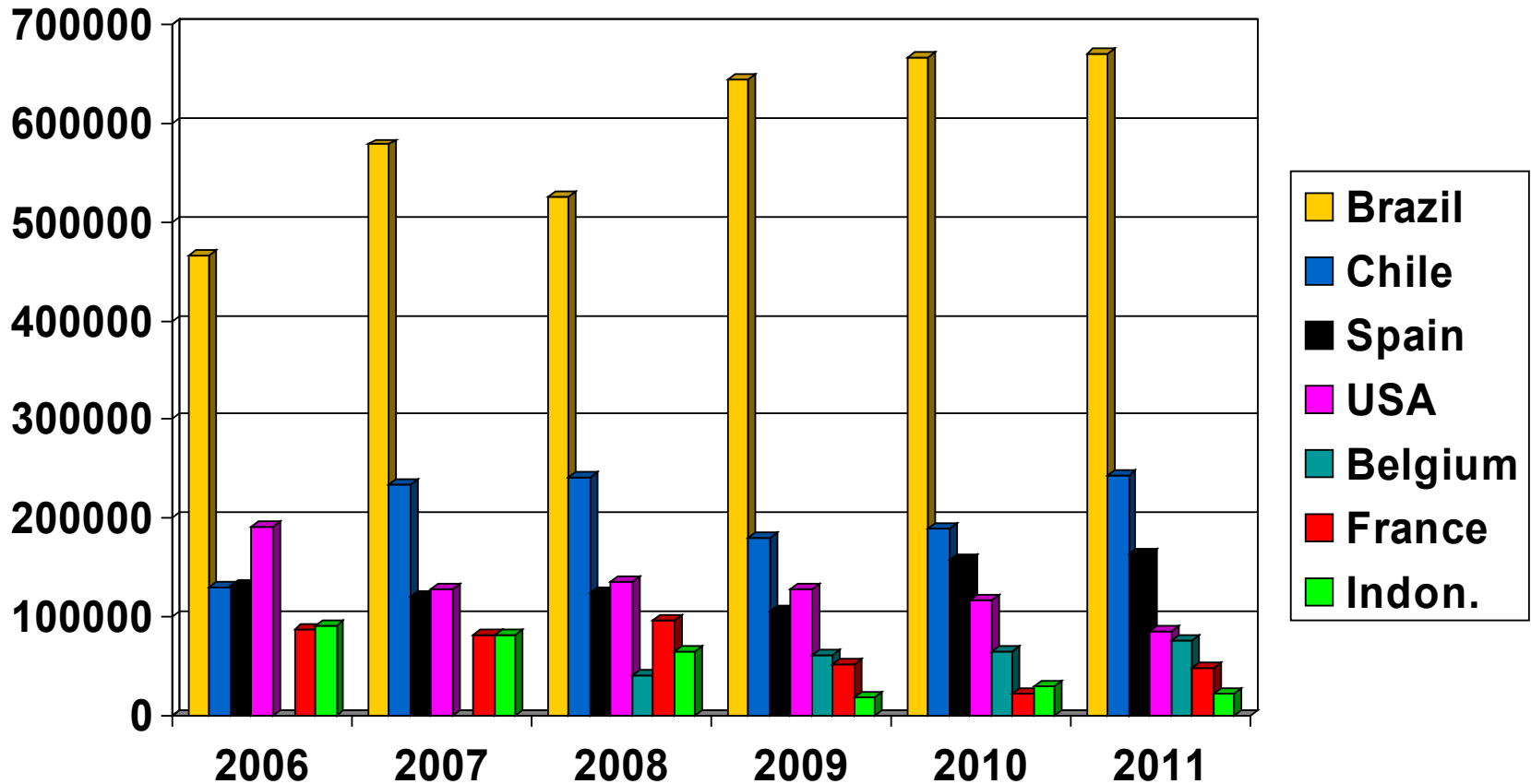
Pulp Imports – Summary

Full Year 2011 vs. 2010

- **Total Imports +1% at 3.175 ml.T.**
(All pulps: bleached/unbleached, chemical, mechanical, semichemical, BCTMP, thermo-mechanical, dissolving, sulfite)
 - **BKH TOT +6% to 1.441 ml.T. Main countries of origin:**
 - Brazil +1 % to 672 kt
 - Chile +28% to 242 kt
 - Spain +4% to 163 kt
 - USA -28% to 84 kt
 - Belgium +19% to 76 kt
 - **BKS TOT -5 % to 1.442 ml.T. Main countries of origin:**
 - USA -7% to 342 kt
 - Canada -9% to 241 kt
 - Sweden -12 % to 197 kt
 - Chile +31 % to 160 kt
 - Germany -5% to 147 kt
 - Finland -9% to 134 kt

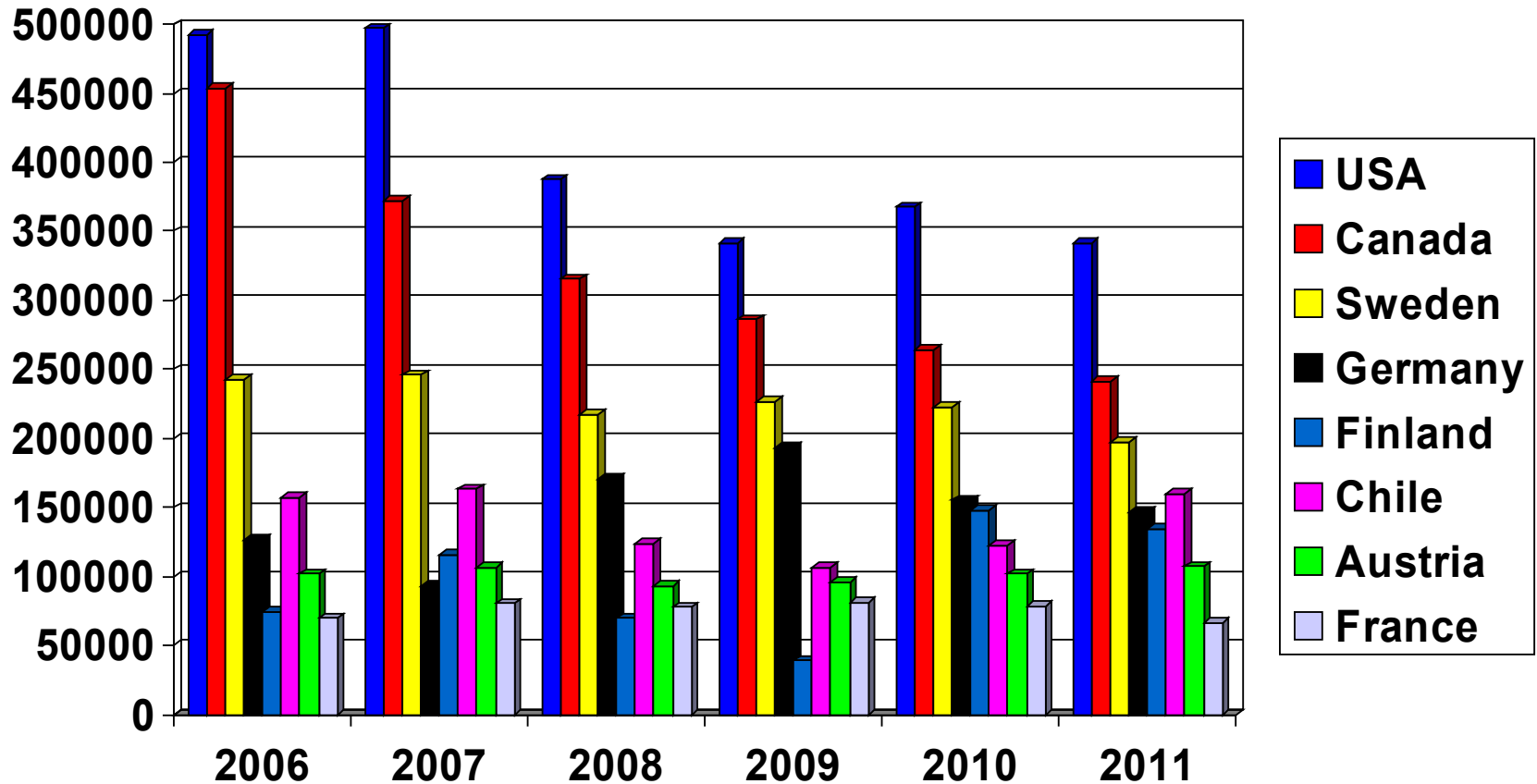
BKHP Imports: Main Origins

Full Year 2006-2011 (*ADMT*)



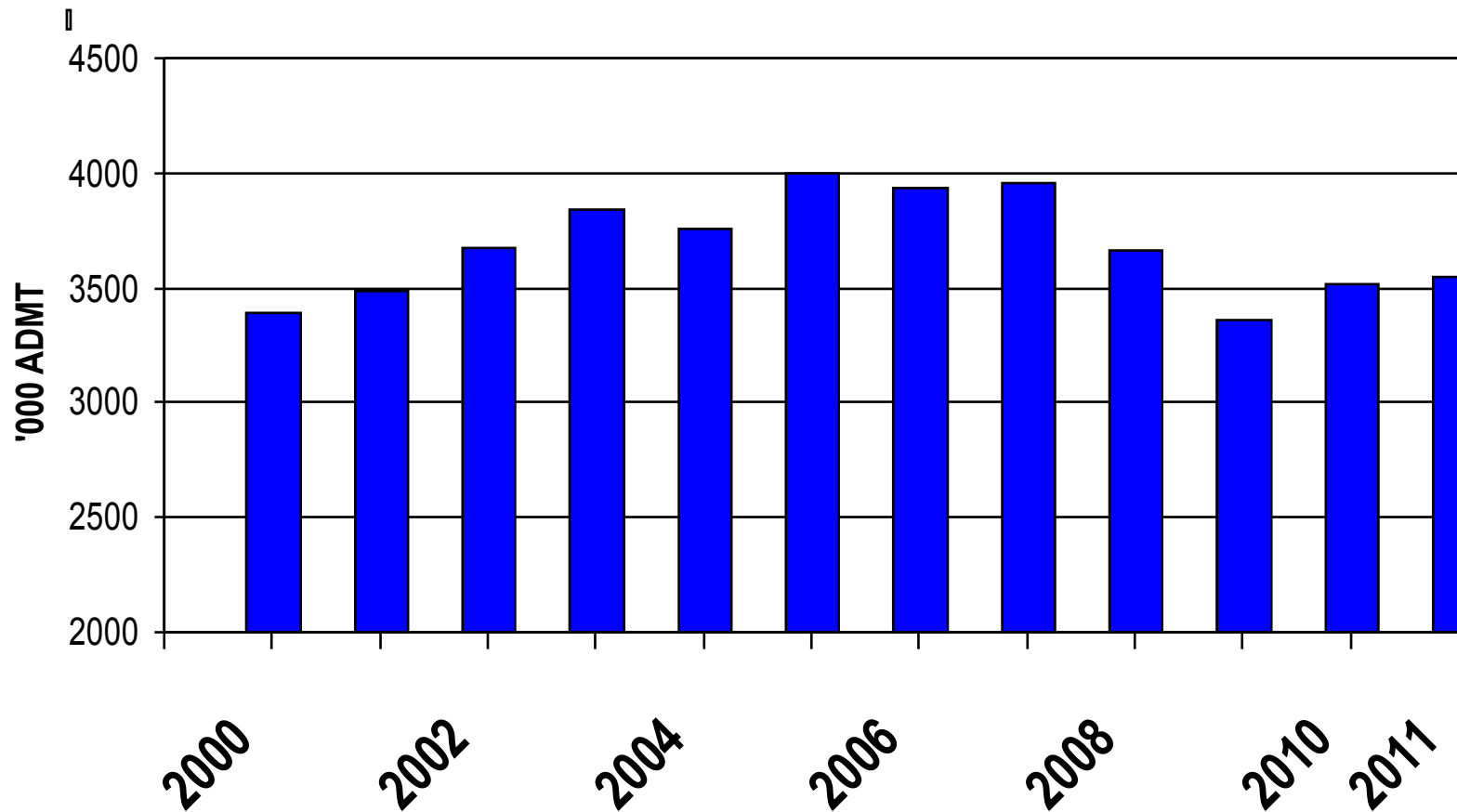
BKSP Imports: Main Origins

Full Year 2006-2011 (*ADMT*)



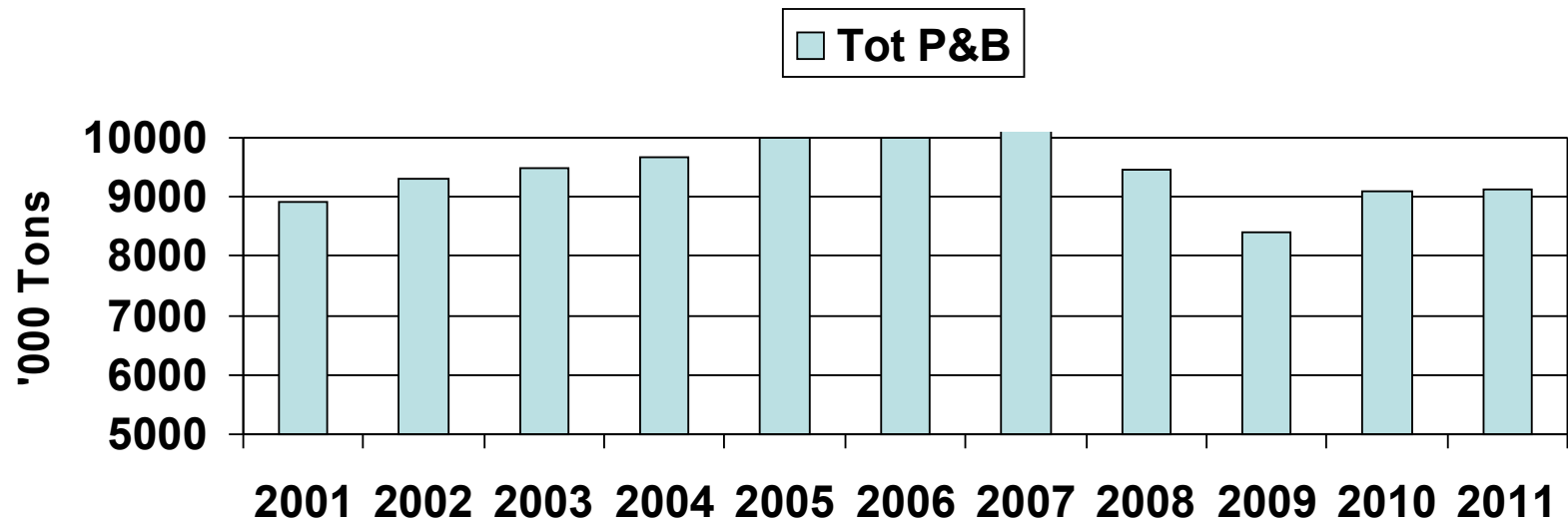
Pulp Consumption

➤ 3.55 ml. tons in 2011, up 5.6% vs. 2010



Paper & Board Production

2011: 9.13 ml.T.

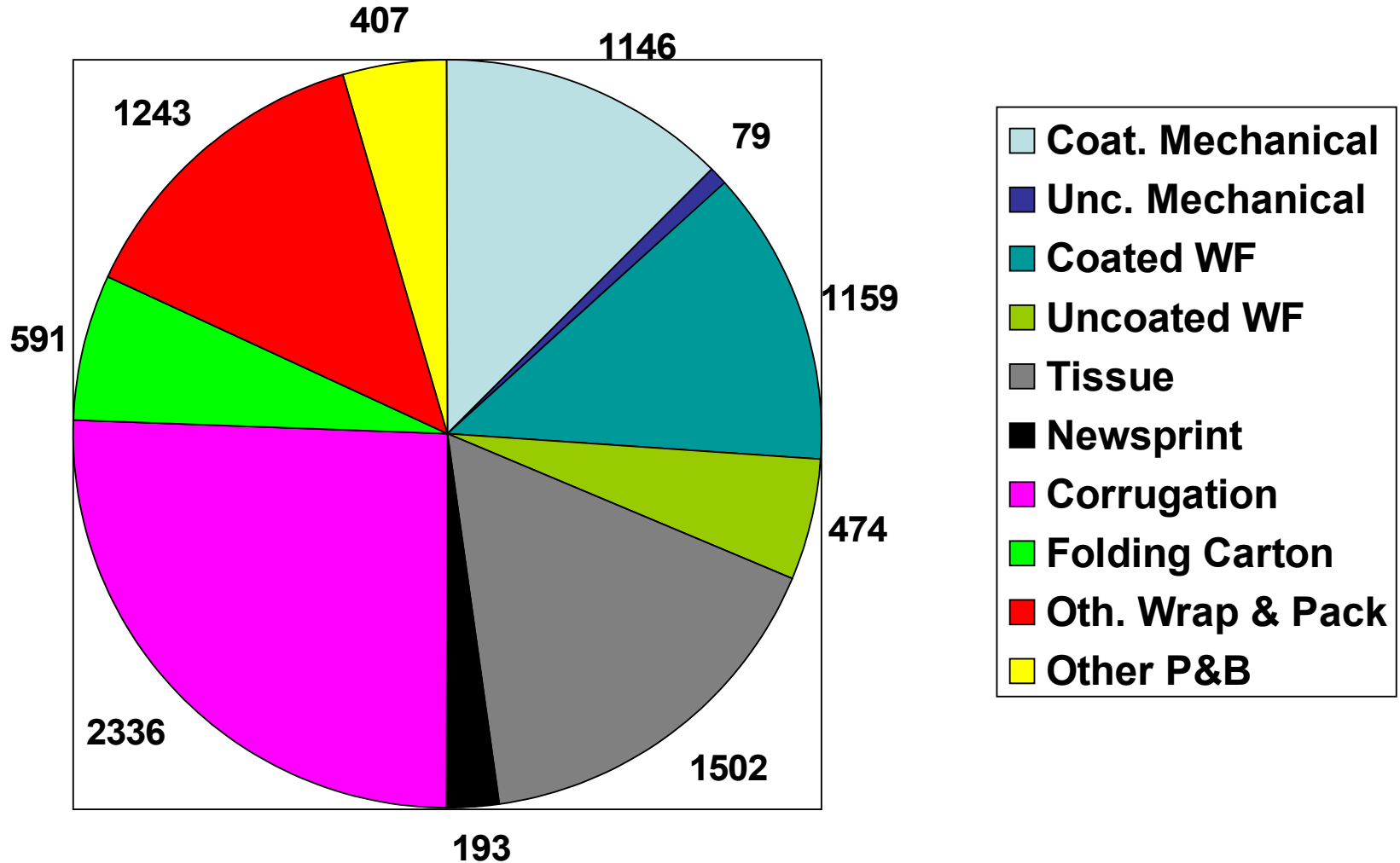


- Production volume and change vs. 2010 by main paper segments:
- Coated mechanical 1.15 ml T (-0.2%)
 - Coated woodfree 1.16 ml T (+ 0.7%)
 - Tissue & towelling 1.5 ml T (+ 8.1%)
 - Containerboard 2.34 ml T (-0.1%)

Paper & Board Production

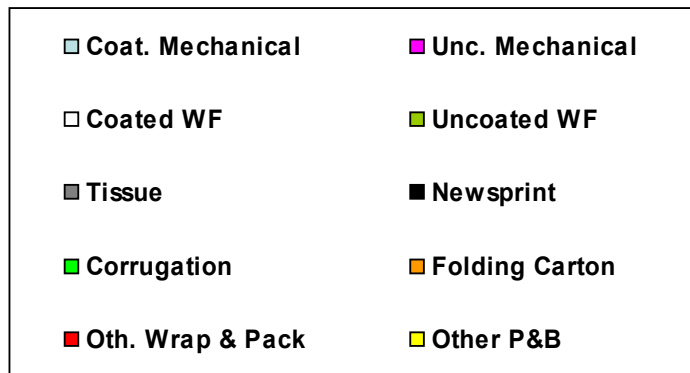
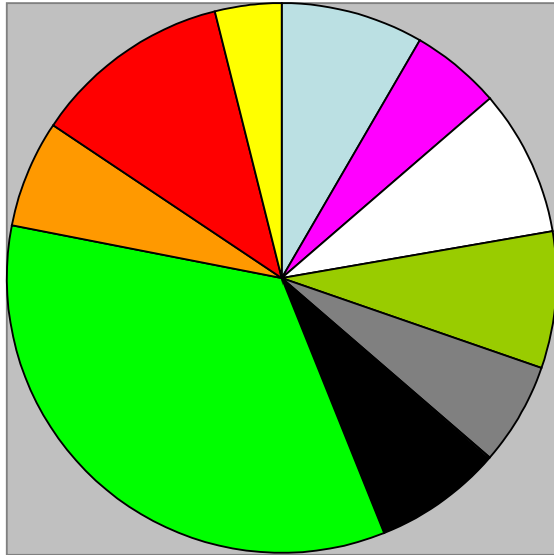
2011 Full Year: 9.13 ml.T. (+0.5% vs. 2010)

(In '000 Tons)



Paper and Board Consumption

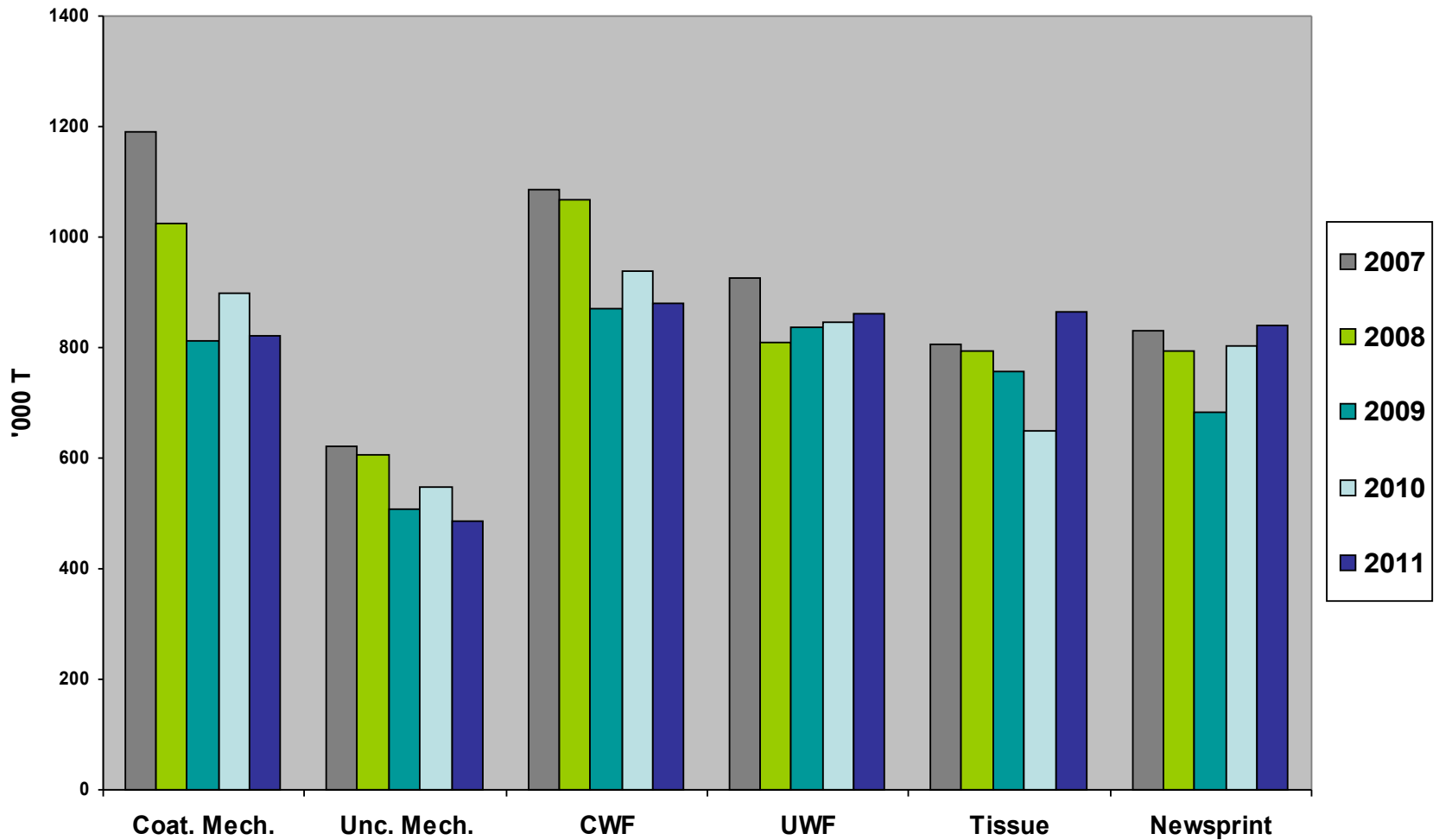
10.68 ml.T. in 2011 (-1% vs. 2010)



- Coated mech 821,000 T (-8.9%)
- Coated WF 879,000 T (-6.3%)
- Unc. Mech. 485,000 (-11.9%)
- Unc. WF 862,000 T (+1.3%)
- Newsprint 840,000 T (+4.2%)
- Tissue 864,000 T (+15%)
- Corrugation 3,543,000 T (-3.0%)
- FBB 703,000 T (+4.7%)
- Other Wrap.1,264,000 T(+1.6%)
- Other P&B 413,000 T (-2.0%)

Paper Consumption

2007 – 2011 FULL YEAR



Board Consumption

2007 – 2011 FULL YEAR

